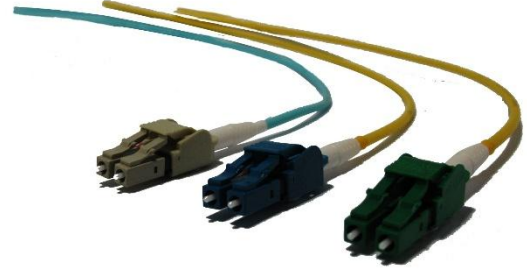


Optec provides a high optical performance Dual LC Uniboot Patchcord which save half of the operation spaces required.

This Uniboot LC patchcord uses unified connectors housing and single-jacketed 3.0mm duplex cable. It dramatically reduces 50% of cable required compare to standard zipcord LC patchcord, ultimately facilitating improved airflow within a high density environment such as data centers and 10G/40G optical networks.

Our stringent manufacturing process and 100% factory tested products assure the excellent optical performance of the cable.



Features and Applications

Unified connectors housing and single boot

Saves the operation space and enhance air flow

Utilizes single-jacketed round duplex cable

Reduce 50% of the cable management space comparing to standard LC patchcords

Ideal for high density installation environment

Ideal for connecting 10GBase transceivers, SFP+ & QSFP+ transceivers for 10 gigabit network connections

Variety of fiber options and enface polishing

Available in G652d OS2, G657A2, OM1~OM4 in different endface polishing include APC, UPC, PC.

Conforms and exceeds industry standards

Compliant with IEC and TIA performance requirements



- ✓ Utilizes single-jacketed round duplex cable
- ✓ Save 50% of cable management space
- ✓ Enhance air flow over high density environment

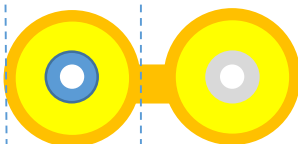
Cable Structure with Single-jacketed Round Duplex Cable



50%
SPACE
SAVING

- ✓ Cable Size = \varnothing 3mm
- ✓ Space required for 2-fiber installation = 3mm

Single-jacketed Round Duplex Cable



- ✓ Cable Size = \varnothing 3mm x 2
- ✓ Space required for 2-fiber installation = 6mm

Traditional Duplex Zipcord Cable

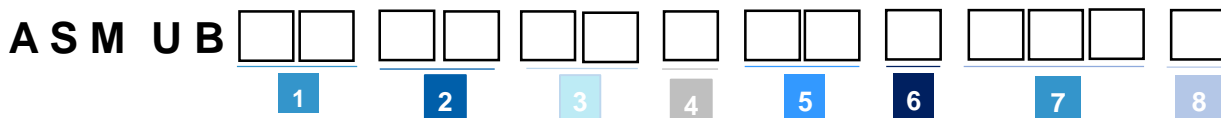
Specifications

Generic Connector Termination

Optical Performance **			
Type	Singlemode		Multimode
	UPC	APC	PC
Maximum Insertion Loss	≤ 0.3 dB	≤ 0.3 dB	≤ 0.3 dB
Typical Insertion Loss	0.2 dB	0.2 dB	0.2 dB
Return Loss	≥ 55 dB	≥ 65 dB	≥ 25 dB
Operating Temperature	-40°C to 80°C		-40°C to 80°C
Test Wavelength	1310nm		850nm
Geometric performance			
Manufactured to comply Telcordia standard GR-326-CORE			

** Optec works with customer to provide highly customized products with different specifications & required optical performance in a flexible pricing scheme. The above optical performance is one of our product tier only, please contact our sales for more details.

Ordering Information



- 1 Fiber Type**
 SM = OS2 (9/125)
 M1 = OM1 (62.5/125)
 M2 = OM2 (50/125)
 M3 = OM3 (50/125 10 Gig)
 M4 = OM4 (50/125 40 Gig)
See note (1)
- 2 Cable Jacket**
 OR = Riser
 LS = Low-Smoke Zero Halogen
- 3 A-End Connector Type**
 UL = LC Uniboot
See note (2)
- 4 A-End Polishing**
 A = APC
 U = UPC
 P = PC
See note (3)
- 5 A-End Connector Type**
 UL = LC Uniboot
See note (2)
- 6 B-End Polishing**
 A = APC
 U = UPC
 P = PC
See note (3)
- 7 Cable Length (Meters)**
 xxx = 001~999
 (please specify)
See note (4)
- 8 Unit of Measurement**
 F = Feet
 N = Inch
 M = Meter
 C = Centimeter

NOTES

- (1) Fiber types other than the above are available (such as G657A, OM5, etc), please contact our sales team for details
- (2) Connectors other than the above are available, please contact our sales team for details
- (3) APC & UPC for Singlemode, PC for Multimode
- (4) Cable length is measured from connector ferrule tip to connector ferrule tip

Optec Technology Limited.

Unit 1701, 17/F., North Tower, World Finance Centre, 19 Canton Road, Kowloon, Hong Kong.
 Tel: +852-2301-8148 | www.optec.com.hk | sales@optec.com.hk